



HARVEY SENIOR HIGH SCHOOL

📍 51 South Western Highway
Harvey WA 6220

📞 9782 3800

✉️ Harvey.SHS@education.wa.edu.au

🌐 harveyshs.wa.edu.au

2026 General and Financial Information for Parents



Harvey Senior High School

Shows respect for...



SELF

We have confidence and pride in our ability to make choices that demonstrate our worth

We...

- are on time to all activities.
- follow the school dress code.
- are organised and prepared to learn.
- follow instructions promptly.
- make safe choices.
- use appropriate language.
- set goals and work to achieve them.
- participate in all activities with enthusiasm.



OTHERS

We recognise and support the rights, beliefs, practices, and differences of others

We...

- are polite and courteous.
- include and support others.
- respect others' boundaries.
- interact with others safely.
- use an appropriate voice volume and tone for the setting.
- work cooperatively with others.
- support everyone's right to learn.



LEARNING

We strive to achieve our best

We...

- understand the learning intention and success criteria of the lesson.
- actively participate in our learning.
- complete tasks to the best of our ability.
- practice learned skills.
- prepare for assessments.
- persevere and give things a go.
- meet deadlines.
- ask for, accept, and apply feedback.
- reflect on our learning.
- use technology appropriately.



ENVIRONMENT

We develop positive habits and make lifestyle choices that protect our environment

We...

- actively preserve and protect our environment.
- leave our environment as we find it.
- honour our cultural connections to Country.
- make responsible choices in the use of resources.
- look after the school's flora and fauna.
- use the appropriate recycle, litter and FOGO bins.



Contents

General Information

| | |
|--|---|
| Attendance..... | 4 |
| Back to School | 4 |
| Buses | 4 |
| BYOD | 4 |
| Canteen | 5 |
| Compass..... | 5 |
| Contact Details | 5 |
| Daily Period Structure, Break Times and Term Dates | 5 |
| Mobile Phones and Digital Device Policy | 6 |
| Student Requirements | 7 |
| Uniform – Dress Code | 8 |

Financial Information

| | |
|--|----|
| Contribution and Charges | 9 |
| Debt Collection..... | 10 |
| Malicious Damage..... | 10 |
| Payment Options..... | 10 |
| Refund Policy..... | 10 |
| Secondary Assistance Scheme | 11 |
| Voluntary Approved Requests | 11 |
| Year 7 and 8 Voluntary Contributions | 12 |
| Year 9 and 10 Voluntary Contributions and Compulsory Charges | 13 |
| Year 11 and 12 Compulsory Charges..... | 14 |
| Extra Cost Optional Components - Year 7 to 12 | 15 |



OUR SCHOOL VALUES *respectables*

| | |
|---------------------|--|
| FOR SELF | |
| FOR OTHERS | |
| FOR LEARNING | |
| FOR THE ENVIRONMENT | |

Attendance

Every School Day Counts



Every day that a student does not attend school can have a negative impact on their learning. The Department of Education monitors student attendance and works with other agencies and service providers to maximise student engagement with learning. It does this in a way that builds shared responsibility for student attendance between schools, students, parents and the broader community.

Parents/Carers should advise Harvey SHS of student **absences via the Compass app** or call 9782 3800.

If you are **considering a family holiday during school term**, you should seek approval by making an appointment to see one of our Admin staff prior to leaving.

If a student presents as unwell during school time, parents will be contacted to arrange for collection.

Every Minute Counts

LATENESS = LOST LEARNING
(Figures below are calculated over a school year)

| | |
|--------------------------|----------------|
| 5 Minutes late each day | 3 days lost! |
| 10 Minutes late each day | 6.5 days lost! |
| 15 Minutes late each day | 10 days lost! |
| 20 Minutes late each day | 13 days lost! |
| 30 Minutes late each day | 19 days lost! |

Be at the classroom on time and ready to learn!

Back-to-School Uniform and Fee-Paying Days

Our back-to-school uniform and fee-paying days will be held, in our Administration Office on:

9.30am to 2.00pm, Wednesday 28th and Thursday 29th January 2026

Payment by cash, Eftpos or direct deposit will be accepted.

| | |
|------------|--|
| Bank: | Westpac |
| BSB: | 036 152 |
| Account: | 208390 |
| Reference: | Student Surname & 8 digit Student Number |



Buses

Bus travel is not permitted without prior approval by School Bus Services. Applications are made via <https://www.schoolbuses.wa.gov.au/>. This can take up to 10 days. Applications for 2026 should be submitted as soon as possible, prior to the commencement of Term 1 2026.



Bring Your Own Device (BYOD)

At Harvey Senior High School there is a Bring Your Own Device (BYOD) initiative for interested students. Students are permitted to bring laptops to school for educational use only. If you and your child would like to access this program, please see our Front Office staff for an application and information package.

Canteen

Our canteen operates Monday to Thursday.

Students are asked to place orders before school.

Please advise of any food allergies or intolerances.

This service is **cash only**, however students have the option to pay by Eftpos by visiting the front office.

Harvey SHS is a member of the School Canteen Association and adheres to the Healthy Food and Drink in Public Schools policy and procedures.



Compass

What is Compass?

Compass is our school management software that allows parents and carers to access up-to-date and meaningful information about our school and your child's progress. Compass includes many different features, including the ability to:

- Monitor your child's attendance, and enter an explanation for absence or lateness
- Communicate with your child's teachers, and update your family contact details
- View your child's timetable and the school calendar
- Monitor your child's homework and assessment tasks
- School Photo information and ordering
- Book parent-teacher conferences – testing phase
- Pay and provide consent for events



How do I access Compass?

Compass is accessible on any modern web browser (Internet Explorer, Firefox, Chrome, Safari) or by using the Compass iOS or Android apps. Please contact our Front Office staff if you are unable to access Compass.

Contact Details

Please ensure our Front Office has your correct email address, home and work contact details. These details can also be updated via Compass.

If you are planning to be away, and your child/children will be in care of another adult, please advise us of this arrangement and provide the contact details of the temporary carer.

Daily Period Structure, Break Times and Term Dates

Period 1 8.50am - 9.54am

Recess 9.54am - 10.19am

Period 2 10.19am - 11.23am

Period 3 11.23am - 12.27pm

Lunch 12.27pm - 12.52pm

Period 4 12.52pm - 1.56pm

Period 5 1.56pm - 3.00pm

Term 1 Monday 2 February to Thursday 2 April

Term 2 Tuesday 21 April to Friday 3 July

Term 3 Tuesday 21 July to Friday 25 September

Term 4 Tuesday 13 October to Thursday 17 December



Mobile Phones and Digital Device Policy

The Department of Education's **Student Mobile Phones in Public Schools policy**, "Off and Away", bans students from using mobile phones from the time they **enter school grounds** to the conclusion of the school day. This includes smart watches and listening accessories, such as headphones and earbuds. Students who have a mobile phone in their possession during school hours must have their mobile phone turned off and out of sight during the school day. All communication between parents and students during school hours should be through our school administration.

Harvey Senior High School Digital Device Policy

Rationale:

- Phones, Tablets, Notebooks, and other devices that have the capacity to interact digitally to transfer data, images and sound are an integral part of modern society. However, they can be: improperly used, lost, stolen or damaged and must therefore be effectively managed.
- In this policy a classroom is defined as 'any place where directed learning or educational activity is occurring'. This includes general classrooms, specialist classrooms, the school library, sport and PE classes, sporting venues away from school, industry visits, swimming/sports carnivals, camp activities and excursions.

Aims:

- To utilise the benefits of the technology.
- To ensure responsible use of the technology.
- To protect staff and students' privacy and confidentiality.
- To protect the image of the school.



Responsibility:

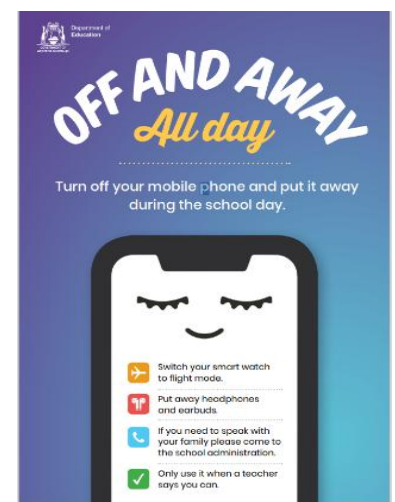
- The procedures in this policy applying to the use of mobile phones apply equally to the use of tablets, laptops, portable computer games, iPods and similar devices.
- All students bringing a phone to school have a responsibility to follow this policy. All staff have a responsibility to follow this policy consistently in all areas.
- Students and parents should be aware that mobile phones/devices are brought to school at their own risk. The owner of the phone/device has full responsibility for the safety and security of their personal possessions while on school premises, at school related events, or travelling to or from school. The school will not accept any responsibility for loss or damage to a student phone.
- The owner of the phone/device is responsible if someone accesses the content in their phone without permission.

Action for inappropriate use:

If students are in possession of a mobile phone, the Principal or delegate has the right to take action. Depending on the circumstances action may include:

- Confiscating mobile phones/devices from individual students.
- Phones confiscated for repeat offences may be held by the school until a parent is able to collect it.
- Requiring students to hand in their mobile phones to designated school staff at the beginning of the school day for collection when students go home.
- Applying student disciplinary provisions.
- Reporting the matter to the police.
- Phones will be immediately confiscated if they are used illegally, or if the breach is of a serious nature.

Repeated refusals will be considered as consistent disobedience and a suspension may result under the Student Behaviour Management and Discipline policy issued by the Department of Education and school processes.



Stationery Requirements

Student stationery requirements may be purchased from a local Newsagent or supplier of your choice. Parents are not required to purchase textbooks for students in Years 7 to 10. Voluntary Contributions and Charges enable the school to purchase class sets of texts, which students may borrow. However, if students lose or damage text or library books, they will be expected to pay for the purchase of the replacement.

All students will require the following:

- | | |
|--|--|
| <input type="checkbox"/> A4 File with Dividers with A4 Lined Paper or Subject Book | <input type="checkbox"/> Pens – red and blue |
| <input type="checkbox"/> A4 Display Folders x 4 | <input type="checkbox"/> Pencils – lead HB or 2B |
| <input type="checkbox"/> 2 x 96 page A4 Exercise Books – <i>Science and Mathematics only</i> | <input type="checkbox"/> Highlighters |
| <input type="checkbox"/> USB (min 32GB) or External Hard Drive | <input type="checkbox"/> Colour Textas |
| <input type="checkbox"/> A4 Document Wallet - <i>Science only</i> | <input type="checkbox"/> Pencils – colour |
| <input type="checkbox"/> A4 Visual Art Diary | <input type="checkbox"/> Pencil Sharpener |
| <input type="checkbox"/> Over-ear Wired Headphones | <input type="checkbox"/> Large Pencil Case |
| <input type="checkbox"/> Over-ear Headphones with microphone – <i>Media only</i> | <input type="checkbox"/> Glue Stick |
| <input type="checkbox"/> Safety Glasses | <input type="checkbox"/> Eraser |
| | <input type="checkbox"/> 30cm Ruler |

****Calculators**

Calculators are an essential item for all students studying Mathematics and Science at high school. It is requested that parents or carers purchase the recommended Abacus SX-II MATRIX Scientific Calculator; this can be purchased online – refer to the [BLUE](#) flyer attached or ask our office staff for an order form.

Parents are asked to ensure ALL PERSONAL ITEMS are clearly marked with the student's name.



Uniforms – Dress Code

Harvey Senior High School dress requirements for students were developed by the School Board in consultation with students, parents and staff of the school. These dress requirements cover the range of study, training and work options in which students engage.

Where there are difficulties in complying with the school's uniform and dress code requirements, support and assistance is available through Student Services.

The Principal may grant exemptions and sanctions as provided in Regulations 35 and 36 of the *School Education Act 1999* and according to processes approved by the School Board as part of the school's dress requirements.

The wearing of denim is prohibited.

Purpose

Harvey Senior High School's dress requirements are tangible evidence of the standards expected of students. The dress requirements play an important role in promoting a positive image of the school and creating a sense of identity among students.

The benefits of dress requirements include: promoting safety of students through easier identification; keeping costs of clothing within reasonable limits for parents; and assisting students to learn the importance of appropriate presentation. Being suitably groomed is part of the process by which students learn to engage with employers and the community.

Acceptable Uniform Items

Navy Blue Shorts
Navy Blue Pants
Navy Blue Skirt
School Tracksuit
School Polo Shirts
School Hoodies
Covered Shoes
Leaver's Jacket/Jumper (Yr 12 Only)



Student Council

Students elected as **Student Councillors** will be required to represent the school in black pants, white collared shirt, school blazer and closed-in black shoes.

H.Y.P.E

There is an expectation that students enrolled in this course will purchase and wear the **H.Y.P.E** uniform. Students may be withdrawn from participating if not in uniform.

General Requirements with the Standard Uniform

- Presentation: Neat and clean uniform is expected.
- Shorts/Skirts length – should be at or below tips of fingertips with hands by your side.
- Garments worn underneath the uniform, are to be white or the school uniform colours (Navy blue, or bottle green). Leggings, tights, and stockings may only be worn under the uniform and must be skin colour or blue.
- Footwear: Covered shoes of a Work, Health and Safety standard.
- Jewellery/Makeup: Must be kept to a minimum and at WHS standard.
- Hair: For health and safety reasons in some practical subjects, shoulder length hair should be tied up.
- Hats: Are highly recommended when outdoors. They must not display inappropriate logos or messages.
- Pants, shorts, hoodies – no logos.
- All uniform items should be clearly marked with a student's name.

Financial Information



Contributions and Charges

The following information is provided to clarify the contributions and charges structure for parents. We wish to assure parents that our efforts have been directed towards keeping costs as low and as equitable as possible and in accordance with the Education Act Regulations.

The 2026 Charges and Voluntary Contributions statements for each year level provide details on how the voluntary contribution amounts are allocated to learning areas from Year 7 to Year 10, as well as the compulsory charge for elective courses. The Year 11 and 12 course is considered post compulsory as students can choose to attend TAFE, obtain employment or an apprenticeship, and therefore all charges are compulsory under the Education Act Regulations.

Information on maximum possible costs for other optional activities such as excursions and camps that students may choose to participate in has also been provided.

Where do contributions and charges go?

Some examples include: ingredients in home economics, transport, photographic supplies, art materials, timber, metals and consumable tools, external instructors, consumable sporting equipment, textbooks, etc.

A Compassionate View

This school is only too aware that the payment of school contributions and charges can be a burden for some families. Part payments, deferred payments and credit card debits are all available to support parents experiencing difficulties. However, we do need to talk to you about this. Ignoring accounts and reminders is unhelpful to all parties. The school is also keen to assist parents in selecting options that they can afford. To this end subject charges will always be available to parents prior to selection of subjects.

Contributions and Charges consist of three components:

1. Voluntary Contributions

Harvey Senior High School is requesting a voluntary contribution of \$235 for each Year 7 to 10 student towards the cost of materials, resources, photocopying costs, textbooks and facilities used by students in their educational program. These contributions will make a significant contribution to the provision of educational resources used to deliver high quality educational programs.

We believe that the best way to provide quality education is through the provision of modern texts and equipment for students. Declining payments of voluntary contributions may result in a poorer standard of educational materials for your child. Therefore, we urge you to pay this portion to enable the school to provide your child with the education we believe they deserve to create their futures.

We also encourage you to begin making plans now, so that you are able to pay your Voluntary Contributions and Compulsory Charges prior to the end of Term One. However, we are aware that this can be a burden for some families, and it is possible to negotiate a **payment plan**. In order to arrange this, please contact our Administration on 9782 3800.

2. Compulsory Charges

- (a) Year 9 and 10 elective courses may attract a compulsory charge. Year 11 and 12 course charges are considered compulsory under the Education Act Regulations. There is no maximum charge for these courses, however the school will keep costs to a minimum.
- (b) Extra Cost Optional Activities are activities which address broad learning outcomes and for which there is an extra compulsory cost – e.g., excursions, camps, carnivals, social events etc. Maximum possible costs for these are listed at the back of this handbook. Parents are required to pay only if students choose to participate in these activities. These charges will be requested throughout the year as the activities arise.
- (c) External Courses – Year 11 and 12
 - Charges relating to external courses delivered or auspiced by a Registered Training Organisation (RTO) or external provider are payable directly to Harvey Senior High School.
 - A 25% deposit is payable at time of enrolment (by 30 November), further 25% installment payable by 31 March. If payment is not received by the due date students will be withdrawn from course.

Depending on the chosen industry, students may also be required to purchase a uniform, protective equipment, textbooks and trade equipment/tools.

- Successful applicants will be advised of the costs associated with each program, together with letters of offer prior to the commencement of tuition.

3. Other Costs

- (a) Personal Items which the students require to participate in an elective course such as safety glasses, stationery, calculators, etc. These items can be purchased from any supplier.
- (b) General Optional Items which students may choose to use or purchase but are not considered essential to the educational program.

Debt Collection

Principals may engage the services of a debt collection agency if all reasonably practicable steps taken to recover charges or fees have been exhausted, including all alternative methods to secure payment.

Malicious Damage

Parents/Carers will be invoiced and deemed responsible to pay for damages, incurred by their child, which were motivated by spite or malice with the intention of causing property damage. For example: holes kicked or punched in walls and doors, graffiti, doors knocked off their hinges, damage to computers and other school property.

Payment Options

Parents/carers will be issued with a 2026 Charges & Contributions statement in Term 4, 2025 advising estimated charges and voluntary contributions payable for each student.

Payment may be made by any of the following methods:

- Direct Deposit: details listed on your child's statement
- In person by cheque, cash or EFTPOS.
- Telephone credit card payment by phoning 9782 3800

Payment of compulsory charges is due by 31 March 2026.

Please contact our office on 9782 3800 if you wish to discuss payment options or set up a payment plan.

Refund Policy

Our School Board has endorsed a "No Refund" policy for payments, including deposits for camps, excursions and other optional activities, where costs are not recoverable by the school.

In the event that parents are able to provide medical or other legitimate evidence for their child not attending an event, they may apply to the school for a refund. In circumstances where a refund is approved by the Principal or delegate, payment will be made via EFT into your nominated bank account. Refunds less than \$30 will be credited to the student's account and used to offset other costs as directed by parents.



Secondary Assistance Scheme

The Western Australian Department of Education provides an allowance to assist eligible families with secondary schooling costs. To be eligible for the allowance the parent/guardian must hold a Centrelink Health Care Card or Pensioner Concession Card or Veterans' Affairs Pensioner Concession Card.

The Secondary Assistance Scheme consists of two components:

- **\$115 Clothing Allowance** - paid directly to the parent/guardian unless indicated on the application form that you wish it to be paid to the school. If payment to the parent/guardian is requested, the payment will be deposited into the parent/guardian bank account. It can take between 8 to 12 weeks to receive this payment.
- **\$235 Educational Program Allowance** - paid directly to the school. The Education Program Allowance (EPA) will be paid directly to the school and in the first instance, will be applied towards education program charges. If the education program charges are less than \$235, the difference will be applied to the voluntary contribution for Years 7 to 10, or as negotiated with the parent/guardian for Years 11 to 12.



Voluntary Approved Requests

| | |
|---|--|
| The following Voluntary Approved Requests and Other Optional Charges are a 'per student' cost which will appear on student's Contribution and Charges statements. | |
| \$10.00 | Chaplaincy Our school is privileged to have a Chaplain, as part of its pastoral care team, onsite for a minimum of two days per fortnight. The Chaplain acts as an advocate for students and liaises with parents, staff and external agencies to support positive outcomes. As the Chaplain is not a teacher, some students may feel more comfortable in approaching the Chaplain when they need someone to talk to. It is not Department of Education policy to pay the salaries of Chaplains. Schools contribute to the cost, along with funds raised through parent donations. We would be grateful if you could donate \$10 or any amount you think appropriate to the Chaplaincy Fund as this will assist in maintaining this valuable service. |
| \$10.00 | Technology Contribution This contribution assists our school to purchase and offer up-to-date ICT equipment for student use. |
| \$10.00 | Library Contribution This contribution is to assist our school with keeping up-to-date books, magazines, games and other resources for students to use. |
| \$5.00 | P&C Donation The Parents & Citizens committee is made up of parents, run on a voluntary basis, who help the school by fundraising much needed funds to purchase items not outlined in the School's Budget requirements. A donation of \$5 or any amount you think appropriate would be appreciated. |

Voluntary Contributions and Charges by Year Level

Year 7 Voluntary Contributions

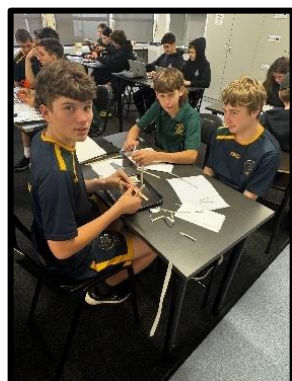
| Course | Voluntary Contribution | Compulsory Charge |
|---|------------------------|-------------------|
| English | 14.00 | NA |
| Mathematics | 14.00 | NA |
| Science | 31.00 | NA |
| Humanities and Social Sciences: | 14.00 | NA |
| Health and Physical Education | 20.00 | NA |
| *Elective Taster Subjects | 142.00 | NA |
| <i>*Students will participate in a selection of the following subjects throughout Year 7: Japanese, Environmental Studies, Media, Performing Arts, Visual Arts, Woodwork, Metalwork, Home Economics and Engineering Technologies (E.T.)</i> | | |
| Voluntary Contribution | 235.00 | NA |

Maximum Voluntary Contribution will **not** exceed \$235.00

Year 8 Voluntary Contributions

| Course | Voluntary Contribution | Compulsory Charge |
|--|------------------------|-------------------|
| English | 14.00 | NA |
| Mathematics | 14.00 | NA |
| Science | 31.00 | NA |
| Humanities and Social Sciences: | 14.00 | NA |
| Health and Physical Education | 20.00 | NA |
| *Elective Taster Subjects | 142.00 | NA |
| <i>*Students will participate in a selection of the following subjects throughout Year 8: Japanese, Media, Performing Arts, Visual Arts, Woodwork, Metalwork, Home Economics and Engineering Technologies (E.T.)</i> | | |
| Voluntary Contribution | 235.00 | NA |

Maximum Voluntary Contribution will **not** exceed \$235.00



Year 9 Voluntary Contributions and Compulsory Charges

| Course | Year or Semester | Voluntary Contribution | Compulsory Charge |
|---|------------------|------------------------|-------------------|
| English | Y | 14.00 | NA |
| Mathematics | Y | 14.00 | NA |
| Science | Y | 31.00 | NA |
| Humanities and Social Sciences | Y | 14.00 | NA |
| Health and Physical Education | Y | 20.00 | NA |
| Students will select and participate in a variety of courses below – 3 per semester. | | | |
| The Arts Electives | | | |
| Visual Arts | S | \$142.00 | nil |
| Performing Arts - Music | S | | nil |
| Media | S | | nil |
| Technologies Electives | | | |
| Engineering Technologies (E.T.) | S | | 10.00 |
| Food Specialisation | S | | 15.00 |
| Metalwork | S | | 30.00 |
| Woodwork | S | | 30.00 |
| Health and Physical Education Electives | | | |
| H.Y.P.E. – Specialist PE | S | | 20.00 |
| Physical Recreation | S | | nil |

Maximum Voluntary Contribution will **not** exceed \$235.00

Year 10 Voluntary Contributions and Compulsory Charges

| Course | Year or Semester | Voluntary Contribution | Compulsory Charge |
|---|------------------|------------------------|-------------------|
| English | Y | 14.00 | NA |
| Mathematics | Y | 14.00 | NA |
| Science | Y | 31.00 | NA |
| Humanities and Social Sciences | Y | 14.00 | NA |
| Health and Physical Education | Y | 20.00 | NA |
| Students will select and participate in a variety of courses below – 3 per semester. | | | |
| The Arts Electives | | | |
| Media | S | \$142.00 | nil |
| Performing Arts - Music | S | | nil |
| Photography | S | | 10.00 |
| Visual Arts | S | | nil |
| Technologies Electives | | | |
| Engineering Technologies (E.T.) | S | | 10.00 |
| Food Specialisation | S | | 15.00 |
| Metalwork | S | | 35.00 |
| Woodwork | S | | 35.00 |
| Health and Physical Education Electives | | | |
| H.Y.P.E. - Specialist PE | S | | 20.00 |
| Outdoor Education | S | | 30.00 |
| Physical Recreation | S | | nil |
| Engagement Program (select students only) | | | |
| SSEP | Y | 235.00 | |

Maximum Voluntary Contribution will **not** exceed \$235.00

Year 11 Compulsory Charges

| Learning Area | | Course | Compulsory Charge |
|---|--|--|-------------------|
| English | GEENG | English General | 50.00 |
| Mathematics | GEMAE | Mathematics Essentials | 50.00 |
| Science | GEHBY | Human Biology General | 50.00 |
| Humanities and Social Sciences | GECAE | Careers and Employability General | 35.00 |
| Health and Physical Education | GEOED | Outdoor Education General | 210.00 |
| | GEPEs | Physical Education Studies General | 100.00 |
| Senior School Engagement Program | SSEP | Senior School Engagement Program inc Cert II | 355.00 |
| The Arts | GEMPA | Media Production and Analysis General | 11.00 |
| | GEVAR | Visual Arts General | 90.00 |
| Technologies | GEDESP | Photography | 25.00 |
| | GEFST | Food Science and Technology General | 150.00 |
| | GEMDTM | Materials, Design and Technology: Metals General | 150.00 |
| | GEMDTW | Materials, Design and Technology: Wood General | 155.00 |
| Uni Prep | 11UNIP | Uni Prep | 50.00 |
| Workplace Learning | ADWPL | Workplace Learning | 50.00 |
| Year 11 External Course Charges | | | |
| <p>Certificate Courses including, but not limited to:</p> <p>Bunbury Regional Trade Training Centre (BRTTC) and Other Certificate Courses through external RTOs</p> | <p>Fee for service course delivered or auspiced by an external RTO. Course cost is dependent on the certificate. Students may be required to purchase a uniform, protective equipment and textbooks.</p> <p>A 25% deposit is payable by 30 November 2025, further 25% installment payable by 31 March 2026. If payment is not received by the due date students will be withdrawn from course.</p> | | \$500 to \$6,000 |

Year 12 Compulsory Charges

| Learning Area | | Course | Compulsory Charge |
|---|--|--|-------------------|
| English | GTENG | English General | 50.00 |
| Mathematics | GTMAE | Mathematics Essentials | 50.00 |
| Science | GTHBY | Human Biology General | 40.00 |
| Humanities and Social Sciences | GTCAE | Careers and Employability General | 35.00 |
| Health and Physical Education | GTOED | Outdoor Education General | 190.00 |
| | GTPES | Physical Education Studies General | 100.00 |
| Senior School Engagement Program | SSEP | Senior School Engagement Program inc Cert II | 355.00 |
| The Arts | GTMPA | Media Production and Analysis General | 11.00 |
| | GTVAR | Visual Arts General | 100.00 |
| Technologies | GTDESP | Photography | 25.00 |
| | GTFST | Food Science and Technology General | 145.00 |
| | GTMDTM | Materials, Design and Technology: Metals General | 150.00 |
| | GTMDTW | Materials, Design and Technology: Wood General | 155.00 |
| Uni Prep | 12UNIP | Uni Prep | 50.00 |
| Workplace Learning | ADWPL | Workplace Learning | 50.00 |
| Year 12 External Course Charges | | | |
| <p>Certificate Courses including, but not limited to:</p> <p>Bunbury Regional Trade Training Centre (BRTTC) and Other Certificate Courses through external RTOs</p> | <p>Fee for service course delivered or auspiced by an external RTO. Course cost is dependent on the certificate. Students may be required to purchase a uniform, protective equipment and textbooks.</p> <p>A 25% deposit is payable by 30 November 2025, further 25% installment payable by 31 March 2026. If payment is not received by the due date students will be withdrawn from course.</p> | | \$500 to \$6,000 |

Extra Cost Optional Components - Year 7 to 12

Compulsory charges apply only where students participate in these activities.

| Learning Area | Yr 7 | Yr 8 | Yr 9 | Yr 10 | Yr 11 | Yr 12 |
|--|------|------|------|-------|-------|-------|
| English | | | | | | |
| Excursions / Incursions and Competitions | 150 | 150 | 150 | 150 | 150 | 150 |
| Mathematics | | | | | | |
| Excursions / Incursions and Competitions | 150 | 150 | 150 | 150 | 150 | 150 |
| Science | | | | | | |
| Excursions / Incursions and Competitions | 150 | 150 | 150 | 150 | 150 | 150 |
| Humanities and Social Sciences | | | | | | |
| Excursions / Incursions and Competitions | 150 | 150 | 150 | 150 | 150 | 150 |
| Languages | | | | | | |
| Excursions / Incursions and Competitions | 150 | 150 | 150 | 150 | | |
| International tour to Japan | 5000 | 5000 | 5000 | 5000 | | |
| Health and Physical Education | | | | | | |
| Excursions / Incursions / Carnivals / Competitions | 140 | 140 | 140 | 140 | 110 | 110 |
| Country Week including uniform and bag | | 750 | 750 | 750 | 750 | 750 |
| SSEP | | | | | | |
| Excursions / Incursions and Competitions | | | | 150 | 150 | 150 |
| The Arts | | | | | | |
| Excursions / Incursions and Competitions | 150 | 150 | 150 | 150 | 150 | 150 |
| Technologies | | | | | | |
| Excursions / Incursions and Competitions | 150 | 150 | 150 | 150 | 150 | 150 |
| General | | | | | | |
| Career Development Excursions / Incursions and Opportunities | 50 | 50 | 800 | 800 | 800 | 800 |
| Good Standing Events | 150 | 150 | 150 | 150 | 150 | 150 |
| Other Micro Credentials eg White Card, RSA | | | | 700 | 700 | 700 |
| Printing Charge (\$20 provides credit for 200 copies) | 40 | 40 | 40 | 40 | 40 | 40 |
| Provide First Aid - HLTAID003 | | | | 170 | 170 | 170 |
| School Ball | | | | | 150 | 150 |
| School Magazine | 25 | 25 | 25 | 25 | 25 | 25 |
| Special Events | 150 | 150 | 150 | 150 | 150 | 150 |
| Year 12 Graduation Sashes | | | | | | 25 |



